

42 Swanfield Road
Waltham Cross, Hertfordshire EN8 7FG
£215,000





42 Swanfield Road Waltham Cross, Hertfordshire EN8 7FG

Chain Free- This marvelous one bedroom third floor apartment, located in the heart of Waltham Cross, a short walk away from the town centre and the train station with direct links to London Liverpool Street; offers a very modern living space, ideal for professionals.

The apartment includes wooden flooring all throughout for a very smart feel, a large double bedroom with duplex windows, fitted wardrobes for the extra storage space, a very modern style bathroom with fitted bath & shower rail, a very large open planned living room area with a fully fitted kitchen with modern top of the range appliances.

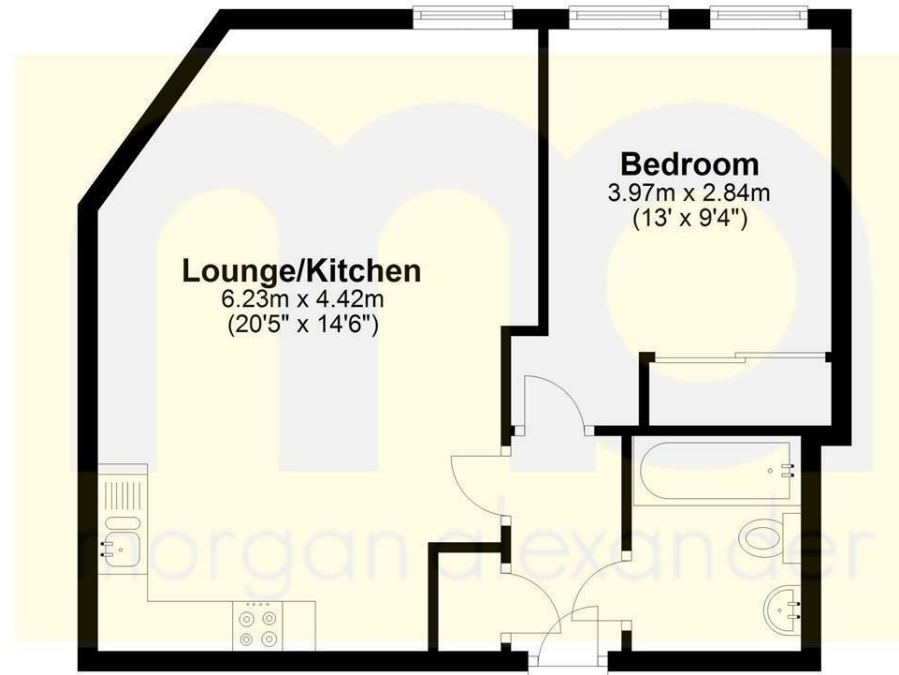
There is a single allocated bay available in the car park.





Third Floor

Approx. 44.0 sq. metres (473.2 sq. feet)



Total area: approx. 44.0 sq. metres (473.2 sq. feet)

FOR ILLUSTRATIVE PURPOSES ONLY. NOT TO SCALE
 Whilst every attempt has been made to ensure the accuracy of the floor plan shown, all measurements, positioning, fixtures, features, fittings and any other data shown are an approximate interpretation for illustrative purposes only and are not to scale. No responsibility is taken for any error, omission, miss-statement or use of data shown.
 Property marketing provided by www.matthewkyle.co.uk

Energy Efficiency Rating		Environmental Impact (CO ₂) Rating			
	Current	Potential		Current	Potential
Very energy efficient - lower running costs			Very environmentally friendly - lower CO ₂ emissions		
(92 plus) A			(92 plus) A		
(81-91) B			(81-91) B		
(69-80) C			(69-80) C		
(55-68) D			(55-68) D		
(39-54) E			(39-54) E		
(21-38) F			(21-38) F		
(1-20) G			(1-20) G		
Not energy efficient - higher running costs			Not environmentally friendly - higher CO ₂ emissions		
England & Wales		England & Wales		England & Wales	
EU Directive 2002/91/EC		EU Directive 2002/91/EC		EU Directive 2002/91/EC	

PROPERTY MISDESCRIPTIONS ACT 1991

The agent has not tested any apparatus, equipment, fixtures and fittings, or services, so cannot verify that they are in working order or fit for their purpose or within ownership of the seller, therefore the buyer must assume the information given is incorrect. References to the Tenure of the property are based on information supplied by the Vendor. The agents have not had sight of the title documents. The buyer is advised to obtain verification from their Solicitor. The measurements supplied are for general guidance and as such must not be relied on as fact. Nothing concerning the type of construction or the condition of the structure is to be implied from the photograph of the property. The sales particulars may change in the course of time, and any interested party is advised to make a final inspection of the property prior to exchange of contracts.

morgan-alexander.co.uk



40 Castle Street, Hertford, Herts, SG14 1HH
 Tel: 01992 248028
westley@morgan-alexander.co.uk